

PT181 Pine Tree

Compressed T-Shirt 4.75" x 6.25"

Stock Art is Available

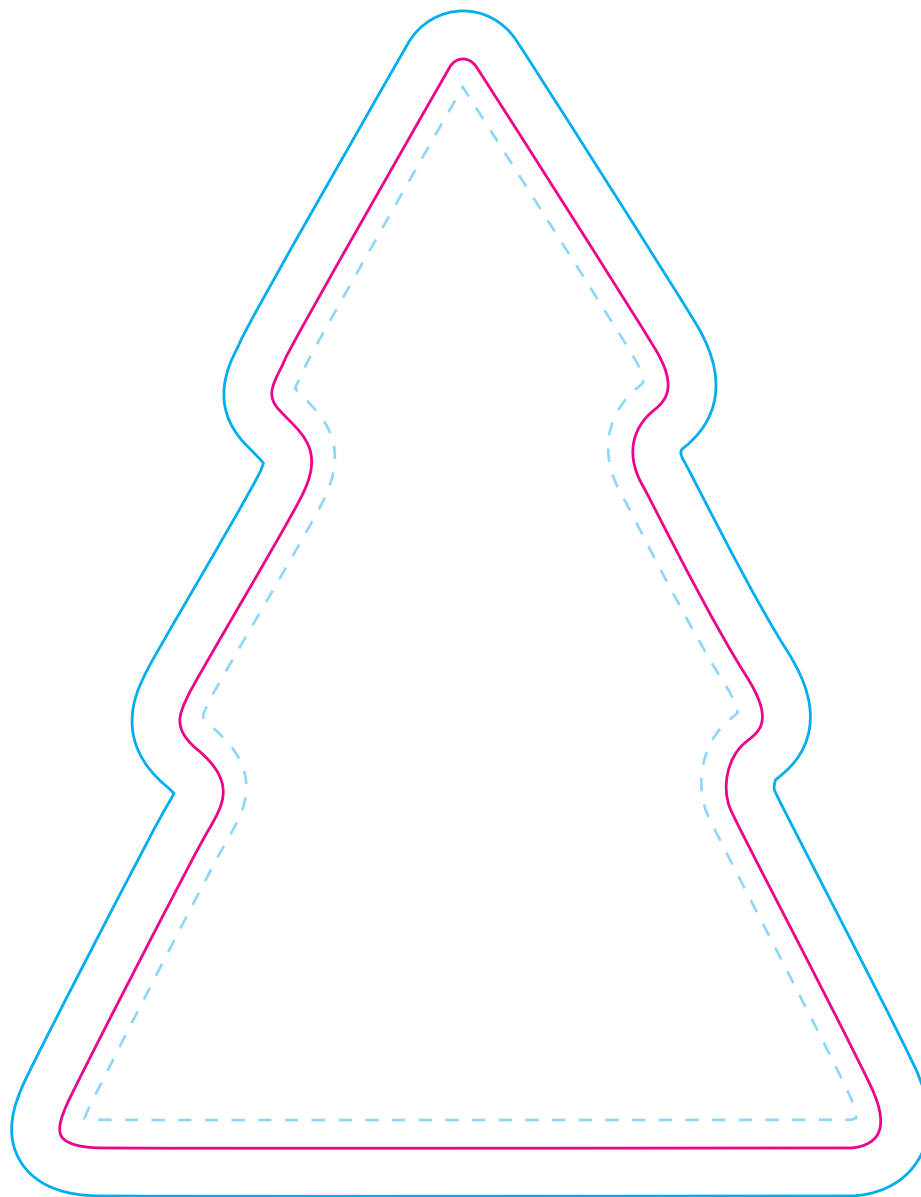
Request from Customer Service

Design Information

Company _____

PO # _____

Date: _____



Artwork Guidelines

- Place all artwork to be printed on the "ART LAYER"
- **OUTLINE** all fonts (or supply font files *not recommended method*)
- Links need to be embedded (to scale)
- All placed images need to be at least 300dpi
- Call out all PMS colors that are to be printed

Submit artwork via <http://www.smashingfactory.com/artupload.htm> for best results (large files ok)

Template Key

- Die Cut Line
- - - Safety Zone
- Bleed